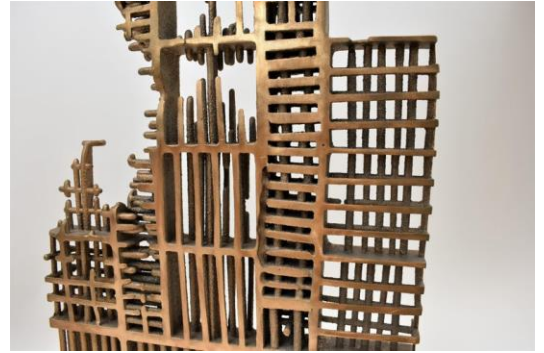


GISELA ENGELN-MÜLLGES

28 January -

3 February 2025



VAN LEEUWEN ART presents sculptures and paintings by **Gisela Engeln-Müllges**.

Gisela Engeln-Müllges is a German mathematician and artist, born in Leipzig Germany, in 1940. Her multifaceted career spans both academia and the art world. As a mathematician, she has made significant contributions to the field of numerical mathematics. Her work extends beyond equations and proofs, as she also expresses her creativity through visual art.

Gisela's artistic endeavors include both painting and sculpture. Through her art, she explores themes of form, color, and abstraction. Her mathematical background influences her artistic process, resulting in pieces that harmoniously blend precision and creativity. Her artistic journey began after her retirement in 2005, and she actively works in the field of art. From April 1994 to January 2015, she was an assistant and partner to sculptor and painter Prof. Benno Werth (1929 - 2015), and since 2006, she has been his student as well. Gisela Engeln-Müllges invented the process of negative casting and fusion for metals in 1962, which she uses extensively in her work. Like Werth, she creates bronze and aluminum sculptures with intricate substructures, all without any welding seams. She began exhibiting her works only after 2014. Her sculptures are characterized by a harmonious blend of the energetic effects of painting and the rational expressiveness of sculpture, bridging the revolutionary spirit of informal art with the rationalism of a mathematician.

Over the past nine years, Gisela Engeln-Müllges has participated in numerous solo and group exhibitions across Europe. She has been represented at major European art fairs, as well as in New York, Tokyo, San Diego, and Miami. In 2024, she exhibited sculptures at ArtExpo New York and had a significant solo exhibition at the Luigi Bellini Museum in Florence, Italy. Her excellence was recognized with an award at the Art Biennale London in 2019 and another award in 2021. Notably, at the world's largest art fair, ArtExpo New York, featuring over 200 galleries and more than 1,000 artists, she received the prize for the best sculpture in 2024.

Whether she's solving mathematical problems or creating captivating artworks, Gisela exemplifies the synergy between logic and imagination. Her solo exhibitions and participation in international art events showcase her talent and passion.



GALERIE
AM
LINDEN
HOF

Pfalzgasse 3, 8001 Zürich

Öffnungszeiten / Opening hours

Täglich / Daily 12.00 - 19.00 Uhr

Contact

VAN LEEUWEN ART | Patricia van Leeuwen

E: contact@vanleeuwenart.com | M: +41 79 927 3504

VAN LEEUWEN ART PRESENTS ARTWORKS BY GISELA ENGELN-MÜLLGES



GALERIE
AM
LINDEN
HOF

**GISELA
ENGELN-MÜLLGES**
Sculptures and paintings

28.01.2025 – 3.02.2025